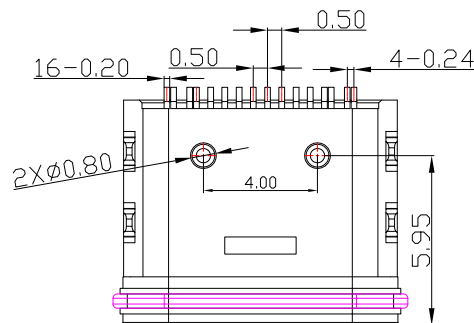
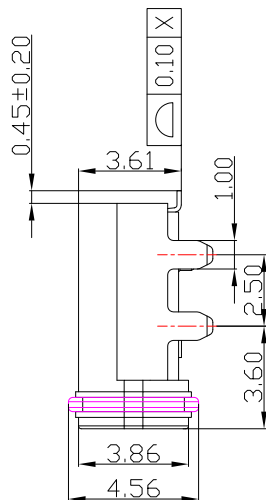
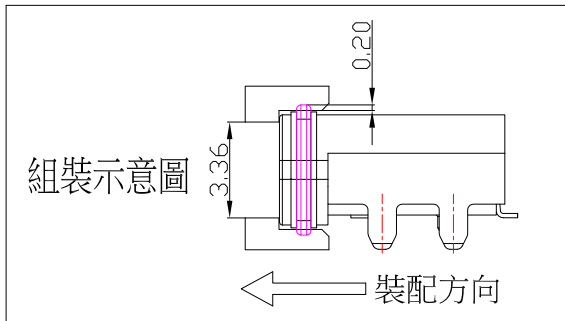
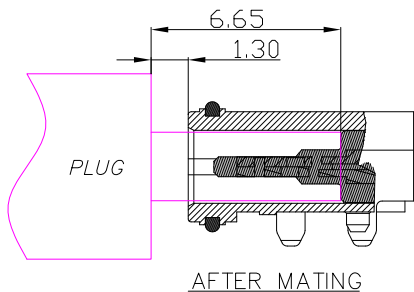
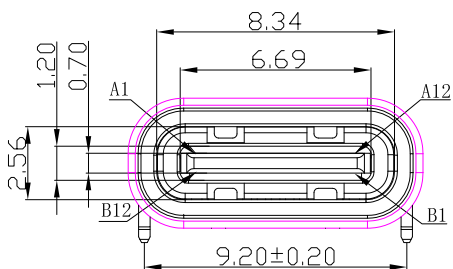
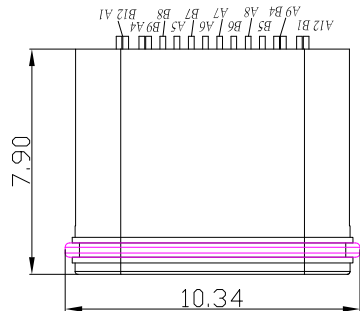
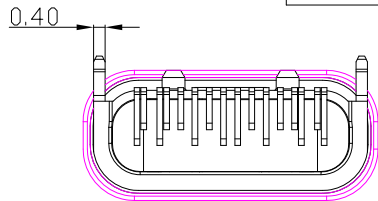


SBC-WP160S2-20x-S412

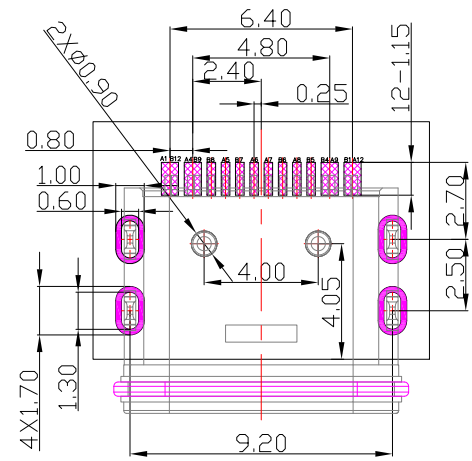
鍍層厚度:

Blank	: 1u"
2	: 15u"
3	: 30u"



IPX7

RoHS
Compliant



RECOMMENDED PCB LAYOUT

A1	GND	B12	GND
A4	VBUS	B9	VBUS
A5	CC1	B8	SBU2
A6	D+	B7	D-
A7	D-	B6	D+
A8	SBU1	B5	CC2
A9	VBUS	B4	VBUS
A12	GND	B1	GND
PIN	SIGNAL NAME	PIN	SIGNAL NAME

SPECIFICATIONS

Electrical:

- Rating: 100V AC , 5.0 A
- Contact Resistance: 40 mΩ Max
- Insulation Resistance: 100 MΩ Min

Mechanical:

- Connector Mate and Unmate Force
 - Mate force: 5~20 N
 - Unmate force: 8~20 N

Material:

- Housing: LCP
- Contact: C7025
- Shell: SUS

Finish:

- Contact: Plated Gold in Mating Area ;
Tin Plated on Solder Balls ;
Nickel under plated overall
- Shell: Nickel under Plated surface layer

建倚科技股份有限公司

CONTACT TECHNOLOGY CORP.

TOLERANCE UNLESS OTHERWISE STATED:		Up to 5	±0.2
		Above 5 ~ 15	±0.3
		Above 15 ~ 30	±0.4
		Above 30 ~ 50	±0.5
		Angle	±0.3°

3RD. ANGEL'S UNITS MM

DRAWN BY:	DATE	MAT'L	TITLE	CONNECTOR
Jack Lu	03/19/24		MODLE	USB C TYPE 2.0 Female 防水型 防水型IPX7
CHECKED BY:	DATE	FINISH	DWG NO.	SBC-WP160S2-20x-S412
Jacky Chen	03/19/24		PART NO.	SBC-WP160S2-20x-S412
APPROVED BY:	DATE	SCALE	1 of 1	
Tony Kao	03/19/24	SHEET NO.	1 of 1	

ITEM NO.	DESCRIPTION	DRAWN	DATE
2	新增對插示意圖	Jack	031924
1	新增尺寸	Jack	012624